



# Dudley Family Safeguarding Partnership

Family Safeguarding is a whole family approach to working with children and families that supports parents to create sustained change for themselves and for their family.

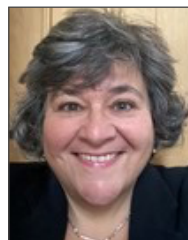
“... families become involved with children’s social care because they are **parenting in conditions of adversity**, rather than because they have caused or are likely to cause significant harm to their children. We have a **shared obligation to help families raise their children.**”

Family Safeguarding, brings together all of the professionals working with the family into one-multi-disciplinary team. The professionals involved include social workers, domestic abuse specialists, substance misuse workers, mental health practitioners, and psychologists, all working together to address compounding issues of domestic violence and abuse, parental substance use and parental mental health.

## Board members



**Catherine Driscoll,**  
Director of Children’s Services  
Dudley Council



**Karen Graham,**  
Service Director  
Dudley Council



**Sal Thirlway,**  
Service Director of Education,  
SEND and Family Solutions  
Dudley Council



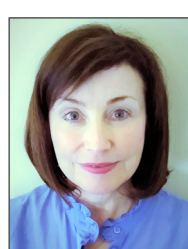
**Luisa Fulci,**  
Director of Digital, Customer  
and Commercial Services  
Dudley Council



**Mayada Abuaffan,**  
Acting Director of Public Health  
& Wellbeing  
Dudley Council



**Kathryn Jones,**  
Director for Housing & Communities  
Dudley Council



**Maria Kilcoyne,**  
Associate Director for Safeguarding  
and Partnerships  
Black Country Integrated Care Board



**Sue Nicholls,**  
Director of Nursing  
Dudley Integrated Health  
& Care NHS Trust, AHP & Quality



**Natalie Solomon,**  
Associate Director for Safeguarding  
Black Country Healthcare Trust



**Keeley Jones**  
Senior Development Officer  
Children, Young People  
& Families, DCVS



**Mary Sexton,**  
Chief Nurse and Deputy Chief Executive  
Dudley Group NHS Foundation Trust



**Paul Levy,**  
Head of Probation  
Probation Service



**Raj Thind,**  
Director of Community Services  
Black Country Womens Aid



**Anji Burford,**  
Services Manager  
Change Grow Live



**Anthony Tagg,**  
Chief Superintendent,  
Dudley Local Policing  
West Midlands Police



**Vicky Buchanan,**  
Independent Scrutineer  
Dudley Safeguarding  
People Partnership

The Family Safeguarding model is a proven and nationally recognised model that has seen substantial reductions in the numbers of children taken into care and better outcomes for children and families.

The benefits of the model are also seen across the system with reductions in police call outs and presentations to A&E.

**For more information please visit <https://www.dudleycpp.org.uk/dudleyfamilysafeguarding>**



the historic capital of the Black Country

